



# GOLF ESTATES BEAUTIFICATION MSTU

## ADVISORY COMMITTEE

8300 Radio Road

Naples, FL 34104

### AGENDA

**JUNE 15<sup>TH</sup>, 2023**

**I. CALL TO ORDER**

**II. ATTENDANCE**

**Tony Branco - Chair (10/1/25)**

**Kathleen Dammert - Vice Chair (10/1/26)**

**Linda Rae Jorgensen (10/1/25)**

**Kathleen Slebodnik (10/1/25)**

**Anita Ashton (10/1/26)**

**Brian Wells – Director, PTNE Div.**

**Dan Schumacher – Project Mgr, PTNE Div.**

**Rosio Garcia, Operations Coord. PTNE Div.**

**Michael McGee – McGee & Associates**

**Gary Gorden – Superb Landscape Services**

**Wendy Warren – Premier Staffing**

**III. APPROVAL OF AGENDA**

**IV. APPROVAL OF MINUTES – [MAY 17<sup>TH</sup>, 2023](#)**

**V. CHAIRMAN’S REPORT – TONY BRANCO**

**A. Community Assessment.**

**B. St Andrews Speeds & Traffic Count**

**VI. CONTRACTOR REPORTS**

**A. [Landscape Architect’s Report](#) – M<sup>c</sup>Gee & Associates (M&A)**

**B. Landscape Maintenance Report – Superb Landscape Services (SLS)**

**VII. PROJECT MANAGER’S REPORT – DAN SCHUMACHER**

**A. [Budget Report](#)**

**B. [Lighting Inspection Report](#) – Outages & Inspection**

**C. Summer Meeting Schedule**

**VIII. ONGOING BUSINESS**

**A. St. Andrews Entryway Monuments Refurbishment**

**B. Traffic Signage – Ownership & Damage Repairs**

**C. Traffic Calming**

**D. Pending Items**

**IX. NEW BUSINESS**

**A. Doral Circle Renovation - Median 23**

**X. COMMITTEE MEMBER COMMENTS**

**XI. PUBLIC COMMENT**

**XII. ADJOURNMENT**

**NEXT MEETING:**

**JULY 19, 2023 AT 2:00 PM**

South Regional Library

8065 Lely Cultural Pkwy

Naples, FL 34113, (239) 252-7542



# GOLF ESTATES BEAUTIFICATION MSTU

## ADVISORY COMMITTEE

8300 Radio Road

Naples, FL 34104

### Minutes

May 17, 2023

#### I. Call to Order

The meeting was called to order at 11:02 A.M. and a quorum of four was present.

#### II. Attendance

**Committee Members:** Tony Branco, Chair; Kathleen Dammert, Vice Chair (Excused); Anita Ashton, Linda Jorgensen, Kathleen Slebodnik

**County:** Dan Schumacher, Project Manager; Rosio Garcia, Operations Coordinator

**Others:** Mike McGee, Landscape Architect, McGee & Associates; Robert Kindelan, Superior Landscape Services; Wendy Warren, Premier Staffing; Andrea Geyer, Resident; Pat McCabe, Resident

#### III. Approval of Agenda

*Ms. Jorgensen moved to approve the Agenda of the Lely Golf Estates Beautification MSTU  
Second by Ms. Ashton. Carried unanimously 4 - 0.*

#### IV. Approval of Minutes – April 20, 2023

*Ms. Ashton moved to approve the minutes of the April 20, 2023, Lely Golf Estates Beautification MSTU. Second by Ms. Jorgensen. Carried unanimously 4 - 0.*

#### V. Chairman's Report – Tony Branco

##### A. Community Assessment

**Chair Branco** reported on observations made during the monthly drive through:

- The front entrance monument renovation project is near completion.
- A Notice-to Proceed (NTP) has been issued for installation of summer seasonal flowers at the front entrance.
- State and County flags will be replaced on Monday, May 22, 2023.
- The second bench on the incoming side of St. Andrews Blvd. and all pavers need to be pressure washed. *Superb Landscaping is scheduled to pressure clean May 17, 2023.*
- St. Andrews, Pebble Beach, and Forest Hills Boulevards medians are well trimmed as is Valley Stream Circle.
- Ten (10) Washingtonia Palms require removal due to their height and deteriorating condition. *Staff has prepared a request for Quote (RFQ). The project dollar amount exceeds \$3,000.00 so procedural guidance from the Procurement Division is being sought.*
- The Pinehurst Monument area needs mulch.
- The Hibiscus Golf Course is undergoing renovation and the irrigation system is disabled.

The Committee discussed:

- MSTU landscaping in the area is manually watered every three (3) days.

## MINUTES

- Manual watering will continue the week of May 20<sup>th</sup> then alternatives evaluated Monday May 22<sup>nd</sup>.
- The cost to continue manual watering versus expense for replacement plant material in the fall will be compared.
- The Committee will determine preference for expenditure on hand watering versus new landscaping at the June meeting.
- The primary concern is the health of the turf.

### **B. St Andrews Blvd. Speeds and Traffic Count**

Two (2) Traffic Logix SafePace 100 speed monitoring signs are functioning on Saint Andrews Boulevard, eastbound by the Lely Presbyterian Church (*Radar 1*) and westbound at Pine Valley Circle (*Radar 2*).

**Chair Branco** distributed a daily vehicle report for data from April 15, 2023, to May 15, 2023.

- Radar 1 (110 St Andrews Blvd) recorded 58,507 vehicles averaging 1,887 vehicles per day. The maximum speed was fifty-five (55) mph.
- Radar 2 (255 Saint Andrews Blvd) recorded 63,203 vehicles for an average of 2,039 per day. The maximum speed was eighty-one (81) mph.

## **VI. Contractor Reports**

### **A. Landscape Architect's Report – McGee & Associates (M&A)**

**Mr. McGee** summarized the “*Lely Golf Estates Landscape Observation Report FY22-23*” dated May 4, 2023.

#### All locations

Recommend increasing irrigation days for Perennial Peanut as soil is dry.

#### Saint Andrews Blvd.

##### Median #1

- Replace the broken valve.
- Recommend replacement of County maintained Allamanda shrubs with variegated Arboricola shrubs for screening. *Mr. McGee will provide a count for the number of shrubs needed.*

##### Median #5

- Apply specialty fertilizer to Foxtail palms - Magnesium Sulphate 0-0-0-16Mg.

##### Median #6

- Address 228: Remove thirteen (13) Plumbago shrubs. Replant area with a single row of yellow African Iris. Adjust existing irrigation heads.

##### Median #9

- Remove deteriorating Washingtonia Palms and add one (1) Alexander Palm.

#### Forest Hills and Golf Cart Crossing

##### Median #12

- Address 438: Bougainvillea shrubs are declining due to rodent activity. Recommend placement of bait stations.

## MINUTES

### Forest Hills Cart Crossing & Lake

- Irrigation deactivated due to renovation of the golf course. Manual irrigation is required.
- Remove Perennial Peanut and replant orange flowered Bulbine 'Hallmark' on resolution of irrigation/water issue.

### Valley Stream Circle

#### Median #13

- The north Tabebuia tree with the duckbill staking system has had a cable cut from a hedge trimmer. The cable was repaired, recommend installation of PVC pipe sleeve for the cable to prevent future mishaps.
- Replace eight (8) Plumbago shrubs.
- The south purple Trumpet tree needs to be replaced.  
*Mr. Kindelan will secure a quote.*

### Pebble Beach Boulevard

#### Medians #15 and #19

- Remove stumps of thirteen (13) dwarf Bougainvillea shrubs and replant in the rainy season.
- Golf Cart Crossing: Treat Spider Lily plants for leaf spot fungus and remove damaged foliage.

### Thorncrest and Briarcliff Lanes

#### Cul-de-sacs #20 and #21

- Recommend renovation of the cul-de-sacs during the rainy season.
- Remove dead plants and apply a light layer of mulch.

### Baltusrol Signs

- Remove all Plumbago shrubs on the outbound side and replant with orange flowered Bulbine 'Hallmark' plants once irrigation issue is resolved.
- Replace five (5) Plumbagoes on inbound side.
- Mulch Philodendron plants on the outbound side.

### Doral Circle East R/W

- Replace Tabebuia tree damage by the hurricane with a single trunk 'Golden Trumpet Tree'.  
*Mr. Kindelan will submit a cost proposal.*

### West R/W & Rattlesnake Hammock Rd

- Pull mulch away from Iris plant bases to prevent fungus.
- Replace five (5) white African Iris plants in front of the Podocarpus hedge.

### Median #23

- Seasonal annuals will be planted.
- Twenty missing Dwarf Red "Fireball" Crown-of-thorn need to be replaced.  
*Plantings are "on hold" pending Committee review of potential renovation.*

## MINUTES

### Water Usage

Recommend clean out of potable water meter box, full of dirt and debris, to enable reading of the box.

- Warren Street
  - April 2023 - 127,015 gallons; no potable water usage.
- Valley Stream
  - April 2023 - 11,980 gallons of potable water.

### **Committee Discussion:**

#### Gateway Entry Monuments

- The Monument renovation was inspected, and punch list drafted in preparation for final payment of the contract.
- The landscape renovation project is a priority and mulch will be applied in the interim.
- The lighting will be evaluated and updated in the future.

*McGee and Associates will create a design of plant choices that are both aesthetically pleasing and environmentally appropriate for the community for presentation to the Committee at the June 2023 meeting.*

### **B. Landscape Maintenance Report – Superb Landscape Services (SLS)**

**Mr. Kindelan** reported:

- Replacement plants noted in the Summary Report have been ordered and a Notice-to-Proceed issued.
- Planting of Bulbine will be postponed until the rainy season.
- A large amount of Perennial Peanut requires replacement.
- Superb submitted a list to Staff of two (2) irrigation zones indicating inadequate water coverage.
- Approximately one-half (1/2) of the thirty-six (36) zone irrigation system is programmed to increase water usage.
- Two Trumpet trees, a Golden and a Purple, are being sourced with nursery providers. Initial cost submissions, particularly for the Golden Trumpet, are high. Quotes from tree vendors are anticipated week ending May 27th.
- The winter annuals were removed May 17<sup>th</sup> and the summer plant scheme will be installed Monday, May 22<sup>nd</sup>.
- Two Foxtail Palms with Ganoderma on St. Andrews Boulevard will be removed during normal maintenance.
- Mr. Kindelan will review the findings of the monthly drive-through with Mr. Gorden.

## **VII. Project Manager's Report – Dan Schumacher**

### **A. Budget Report**

#### Lely MSTU Fund Budget 152 dated May 17, 2023

- The FY-23 Millage rate remains constant at 2.0000 mills.
- Current Ad Valorem Tax, Line 1, is \$360,700.00; an increase of 15.38% over FY-22.
- Transfers and Contributions, Line 12, are \$529,428.95; a carryover of unexpended FY-22 funds (minus 5%).
- Total Revenue, Line 13, is \$893,128.95, including investment interest, transfers, and contributions.

## MINUTES

- Purchase Orders: (by Contractor):
  - Davey Tree Experts – Tree trimming Rattlesnake Hammock Road.
  - Forestry Resources – Mulch.
  - Graybar – Lumec LED Retro Fixtures.
  - Hart’s Electrical – Electrical Maintenance and LED Fixtures.
  - Howard Fertilizer.
  - McGee & Associates – Landscape Architecture.
  - McShea Contracting – Paver Crosswalks.
    - The Lump Sum Contract, in the amount of \$49,495.00 has been paid.
  - Naples Electric Motor Works – Pump Maintenance.
  - National Traffic Signs
  - NR Contractors Inc. – Entryway Monument Refurbishment.
    - The Lump Sum Contract will be paid when the job is completed satisfactorily.
  - Premier Staffing – Transcription Services.
  - Sight N Sound, dba Naples Christmas Lighting – Holiday Decorations.
  - SiteOne Landscape Supply – Irrigation Parts & Pumps.
  - Superb Landscaping Services –
    - Incidentals for landscape refurbishment and miscellaneous.
    - Grounds Maintenance for regularly scheduled tasks and irrigation repairs.
- Operating Expense, Line 34, budgeted at \$333,378.95; with current Commitments of \$102,743.02 Expenditures of \$147,431.88, and a Budget Remainder (unspent operating funds) of \$83,204.05.
- Capital Outlay, Line 36, budgeted at \$338,950.00, has a current Commitment of 149,750.00 to fund the *Entryway Monument Refurbishment Project*.
- Transfer to Fund 111, Line 37, in the amount of \$58,800.00, is for MSTU Staff salaries and accrued County overhead related to MSTU operations.
- Transfer to the Property Appraiser, Line 38, in the amount of \$3,100.00, is for computation of MSTU Ad Valorem data for the tax rolls.
- Transfer to the Tax Collector, Line 39, in the amount of \$8,900.00, is for collection of MSTU millage as part of the annual tax bill, currently 2.0000 mills.
- Reserves, Line 42, in the amount of \$150,000.00, is designated for Insurance and Catastrophic damage repair.
- Total Budget, Line 43, lists FY-23 MSTU budgeted funds at \$893,128.95; with tabulated Commitments of \$252,493.02, Expenditures of \$216,090.06, and a Budget Remainder (total unspent funds) of \$424,545.87. The Budget amount of \$893,128.95 does not change during the fiscal year.

### ***Noted:***

- Replacement of street signs, if undertaken by the MSTU, will be funded from the Other Contractual category.
- Fund 152 is exclusive to the Lely MSTU and cannot be utilized by outside entities.
- FY-23 millage rate of 2.000 accumulates funds for maintenance of community assets as identified in the Capital Asset Management Plan, updated annually, and special projects.
- If necessary, a budget amendment to meet Operating Expense requirements, consistent with the MSTU ordinance, can be requested upon a motion by the Advisory Committee and executed upon approval by the Board of County Commissioners (BCC).
- Modifications to the Millage Rate must be approved by the Board of County Commissioners (BCC).

**B. FY-24 GovMax Budget - Preliminary**

Lely MSTU Requested Budget 152 Fiscal Year 2024

Notes:

- The FY-24 budget levies a total of 2.0000 mills or \$2.00 per \$1,000.00 of taxable value to support ongoing maintenance requirements and pay-go capital improvements.

Forecast FY 2023:

- The forecast Net Operating Budget is \$452,000.00, in line with the Adopted Budget of \$466,000.00.
- The majority of operating expenses cover contractual landscape maintenance and landscape supplies.

Current FY 2024:

- The requested Net Operating Budget is \$565,200.00, a 21.3% increase over FY 2023.
- Operating expenses include a landscape services contract and appropriations to maintain the landscape system along with a \$168,950.00 improvement allowance and a \$150,000.00 hurricane reserve.

Revenues:

- The Lely MSTU Advisory Committee has recommended that the millage rate cap of 2.0000 per \$1,000.00 of taxable value be levied to support ongoing maintenance requirements and pay-go capital improvements budgeted in Fund (152). This will generate \$381,400.16 in property tax revenue based on a taxable value increase of 5.75% over 2023.

Carry Over Funds

- Funds not expended in FY-23 are carried forward into the FY-24 budget.

**Mr. Schumacher** noted:

Grounds Maintenance – Multi-Year Contract

- The current contract with Superb Landscaping Services (SLS) expires in 2023.
- A request will be made to extend the SLS contract to ensure continuity of service.
- An *Invitation to Bid (ITB)* for a new Grounds Maintenance contract for the MSTU will be posted the week ending May 20, 2023, to be awarded to the lowest qualified bidder at the end of SLS's contract extension.
- The contract is subject to approval of the Board of County Commissioners (BCC).

Future Projects

- The Irrigation Quality reclaim water line on Rattlesnake Hammock Road can be accessed for Doral Circle.
- A request for service will be filed with the Irrigation Quality Department and a Right of Way (ROW) permit sought for the work.
- A quote will be solicited from SLS to connect to the line as a commercial user to the area.

Asset Management Plan

- The *Asset Management Plan* report to identify life expectancies of community assets and corresponding expenditure projections to fund this maintenance will be updated and presented to the Committee upon finalization of the FY-24 budget.

**C. Lighting Inspection Report – Outages & Inspection**

- Red entries indicate current lamp outages, gray for outages repaired from the previous report, and purple for Metal Halide lamp replacements.
- The May 3, 2023, report indicated no outages.
- Hart’s Electrical replaced the ten (10) remaining Metal Halide lamps and one (1) light outage with Lumec retrofit replacements.
- Three (3) fixtures remain in inventory.

**D. Tree Trimming along Rattlesnake Hammock Road**

The Davey Tree Expert Company pruned the trees encroaching into the Right of Way (ROW), overhanging the fence hedgerow sections behind the five (5) houses between Rattlesnake Hammock Road and Willow Creek Lane.

The remaining tree trimming debris will be removed by SLS during routine maintenance.

**E. Summer Annuals**

Saint Andrews Front Entrance and Doral Circle

The *Summer Annual Planting Scheme for Median #1 on St. Andrews Boulevard and Doral Circle* consisting of a lavender and deep pink mix of Pentas and yellow Purslane, will be installed Monday May 22<sup>nd</sup>.

**VIII. Ongoing Business**

**A. St. Andrews Entryway Monuments Refurbishment**

NR Contractors, Inc. is under contract to refurbish the two (2) Lely Golf Estates community entryway sign monuments at the intersection of St Andrews Blvd. & US-41.

An on-site meeting was held on May 11<sup>th</sup> with Mr. Schumacher, Chair Branco, Mr. McGee and a representative from NR Contractors to inspect the monuments and confirm they conform to the specifications.

- The Monument renovation was inspected, and punch list drafted in preparation for final payment of the Contract.
- Clarification on the backing of the inner copy band was requested.
- The Logo & Lettering refurbishment process and requirements for on-going maintenance were discussed.

*Mr. Schumacher will determine the entity responsible for letter polishing and ongoing maintenance.*

*Mr. McGee will prepare concepts for a landscape design in the monument entrance areas for review by the committee.*

**B. Traffic Signage Damage Repairs**

Donation of Decorative Traffic Signs to the MSTU

- Twenty-seven (27) signs damaged by Hurricane Ian need various levels of repair.
- Transfer of ownership of all decorative signs by the Homeowners Association (HOA) to the MSTU is required for MSTU-funded repairs.
- Staff has consulted with the County Attorney’s Office on the process for the Lely Civic Assn. to transfer assets and maintenance responsibilities for the LGE traffic signs to the MSTU.
- The Board of County Commissioners (BCC) must approve the transfer.



## MINUTES

- Repairs are “on hold” pending resolution of issues with the recently amended Lely Civic Association documents.

### HOA Documents

- On review, the broader Civic Association claims of jurisdiction over assets and easements within LGE which conflict with the MSTU or the County, must be corrected in the HOA documents and adopted by the community.
- In response to MSTU’s request, Ms. McGarity submitted proposed amendments to the documents. Discussions regarding the HOA’s claims of assets and easements remaining in the draft amendments ensued. It was agreed that conflicting HOA claims need to be resolved before presentation to the County attorney and the BCC.
- An acknowledgement of receipt of the proposed document revisions, and corresponding response will be submitted to the HOA Board of Directors.

**Mr. Schumacher** will request:

- An inventory of community signage.
- The contact information for the HOA’s attorney.
- A copy of a recent financial audit for the HOA to ascertain the Associations ability to pay for signage.

*Mr. Schumacher and Chair Branco will review the outstanding items requiring a resolution to document language to authorize sign repairs. Requirements for the MSTU to accept the signs will be submitted to the Civic Association.*

### **C. Traffic Calming**

The consensus of the Committee is to postpone speed deterrent devices until the Public Utilities Renewal (PUR) project is completed.

### **D. Pending Items**

There are no pending items for discussion currently.

## **IX. New Business**

### **A. Doral Circle – Median 23 Renovation**

- The area will not be excavated and refilled with new soil to remediate Ganoderma contamination for Palms to be planted.
- Bougainvillea shrubs and Crown-of-thorns would be removed.
- Colorful flowers/shrubs such as impatiens and/or dwarf Ixora are desirable.
- Native grasses such as Muhly Grass could be attractive.
- A low, dark green shrub to cover the lower portion of the sign base is recommended.
- The irrigation system will be evaluated.

*Andrea Geyer offered to create a landscape plan for the median for Committee consideration at the June 2023 meeting. The plan will be submitted to Mr. Schumacher for inclusion in the June 2023 Read Ahead.*

*Mr. McGee will subsequently propose a design layout for renovation of the median to the Committee.*

MINUTES

**X. Committee Member Comments**

None

**XI. Public Comments**

**Andrea Geyer** volunteered to create a landscape design for Median #23. See Doral Circle comments noted above in IX, New Business.

**XII. Adjournment**

*There being no further business to come before the Committee, the meeting was adjourned by the Chair at 1:04 P.M.*

**LELY GOLF ESTATES BEAUTIFICATION MSTU ADVISORY COMMITTEE**

---

**Tony Branco, Chair**

These Minutes were approved by the Committee on \_\_\_\_\_, 2023 as presented \_\_\_ or as amended \_\_\_.

**NEXT MEETING:**

JUNE 15, 2023  
SOUTH REGIONAL LIBRARY  
8065 LELY CULTURAL PARKWAY  
NAPLES, FL 34113  
239.252.7542

# Count by Speed Range Report

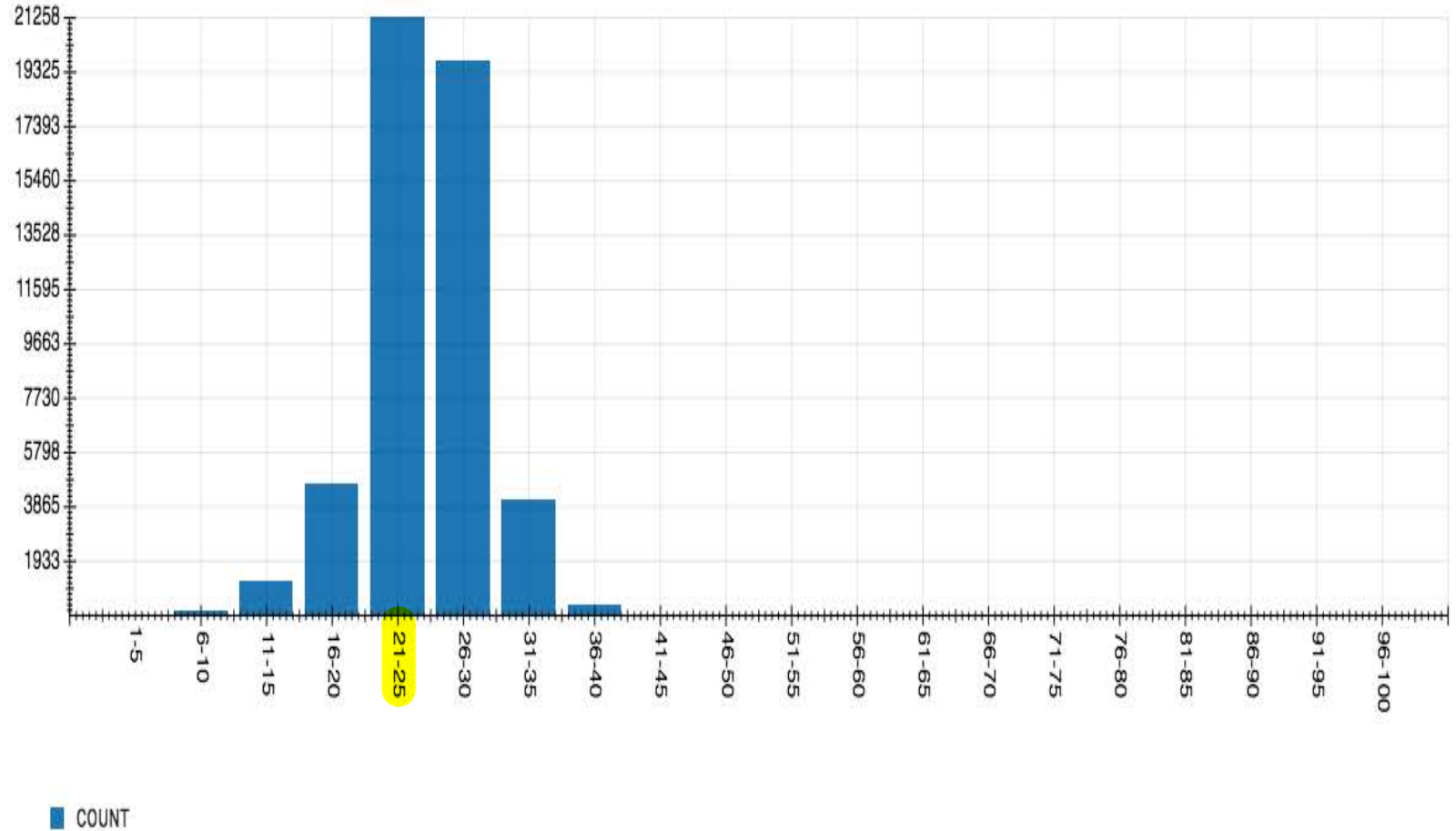
Location: Radar 1

Report period: 2023-05-13 to 2023-06-13

Address: Saint Andrews Boulevard

Count By Speed Range

Speed (mph)	Count
1-5	22
6-10	171
11-15	1197
16-20	4647
21-25	21258
26-30	19731
31-35	4074
36-40	327
41-45	33
46-50	7
51-55	2
56-60	1
61-65	0
66-70	0
71-75	0
76-80	0
81-85	0
86-90	0
91-95	0
96-100	0
Total	51470



# Radar 1 Traffic Report 5/13-->6/13-23

Location: **Radar 1**  
 Address: **Saint Andrews Boulevard**  
 Speed Limit: **From schedule 25 mph**

Report Period: **2023-05-13 to 2023-06-13**  
 Total Vehicle Count: **51470**

Date/Time	Total Vehicle	# of Speed Violations	% of Speed Violations	Max Speed (mph)
2023-05-13	1619	923	H 57 %	39
2023-05-14	1389	780	56 %	41
2023-05-15	H 1884	930	49 %	42
2023-05-16	1831	1027	56 %	48
2023-05-17	1827	1026	56 %	39
2023-05-18	1823	1046	H 57 %	43
2023-05-19	1864	H 1066	H 57 %	47
2023-05-20	1486	836	56 %	41
2023-05-21	1234	709	H 57 %	H 56
2023-05-22	1793	876	49 %	39
2023-05-23	1749	977	56 %	41
2023-05-24	1793	971	54 %	40
2023-05-25	1721	942	55 %	42
2023-05-26	1852	977	53 %	42
2023-05-27	1509	766	51 %	46
2023-05-28	1290	670	52 %	47
2023-05-29	1361	690	51 %	44
2023-05-30	1635	840	51 %	42
2023-05-31	1709	927	54 %	43
2023-06-01	1739	956	55 %	45
2023-06-02	1811	987	55 %	54
2023-06-03	1462	804	55 %	47
2023-06-04	1177	595	51 %	53
2023-06-05	1573	685	44 %	42
2023-06-06	1681	854	51 %	48
2023-06-07	1590	834	52 %	47
2023-06-08	1639	878	54 %	43
2023-06-09	1720	915	53 %	42
2023-06-10	1351	761	56 %	42

2023-06-11	1142	646	H 57 %	42
2023-06-12	1623	838	52 %	40
2023-06-13	1593	875	55 %	43
Summary	SUM: 51470	SUM: 27607	AVG: 54 %	

# Count by Speed Range Report

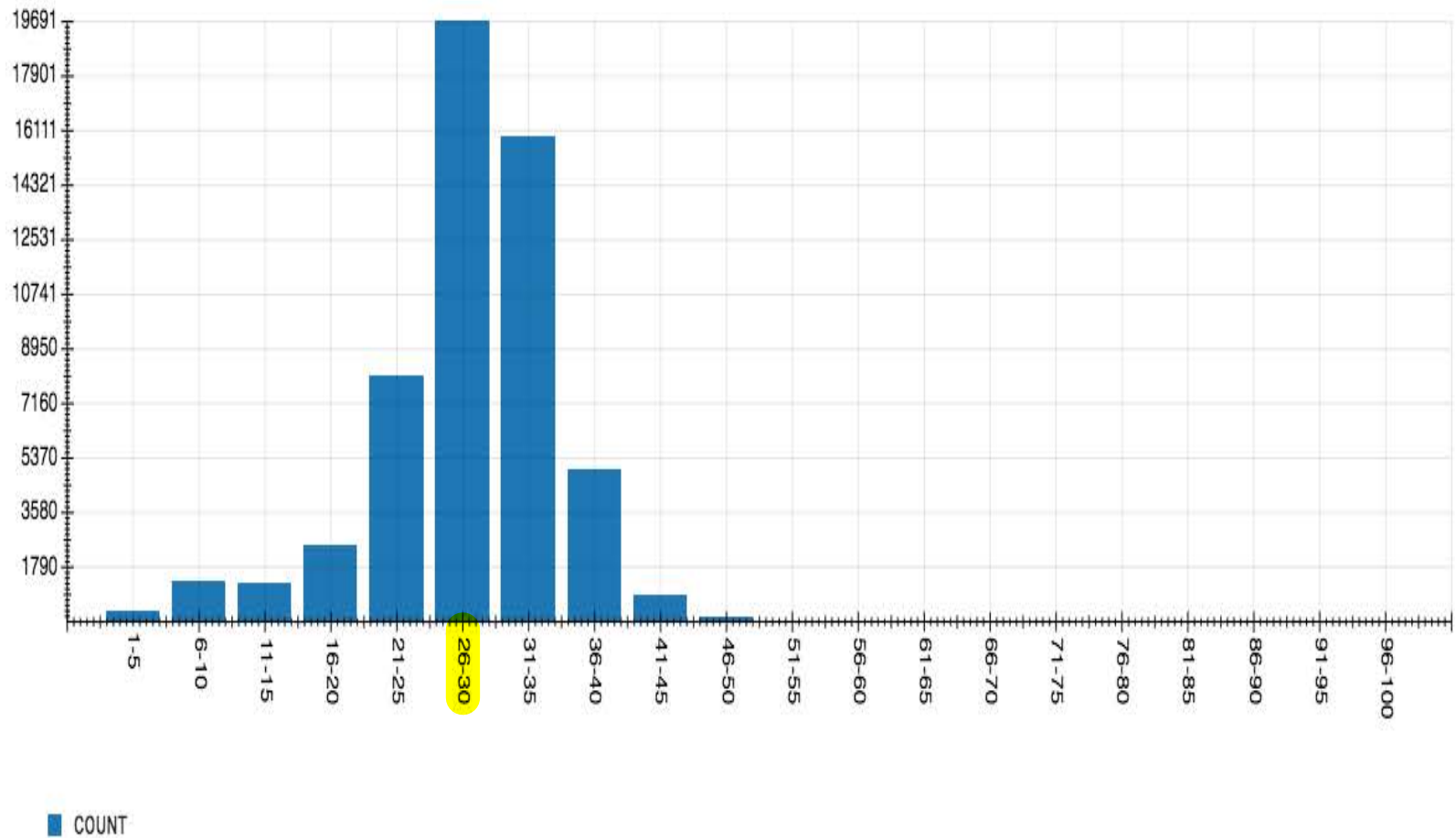
Location: Radar 2 - 20120088

Report period: 2023-05-13 to 2023-06-13

Address: 255 Saint Andrews Blvd Naples

Count By Speed Range

Speed (mph)	Count
1-5	352
6-10	1330
11-15	1265
16-20	2519
21-25	8059
26-30	19691
31-35	15912
36-40	4993
41-45	841
46-50	108
51-55	21
56-60	6
61-65	2
66-70	2
71-75	0
76-80	0
81-85	0
86-90	0
91-95	0
96-100	0
Total	55101



# Radar 2 Traffic Report 5/13-->6/13-23

Location: **Radar 2 - 20120088**  
 Address: **255 Saint Andrews Blvd Naples**  
 Speed Limit: **From schedule 25 mph**

Report Period: **2023-05-13 to 2023-06-13**  
**Total Vehicle Count: 55101**

Date/Time	Total Vehicle	# of Speed Violations	% of Speed Violations	Max Speed (mph)
2023-05-13	1741	1378	79 %	47
2023-05-14	1435	1138	79 %	62
2023-05-15	2041	<b>H 1628</b>	80 %	<b>H 66</b>
2023-05-16	2014	1567	78 %	52
2023-05-17	1978	1574	80 %	55
2023-05-18	1906	1515	79 %	58
2023-05-19	2005	1590	79 %	50
2023-05-20	1660	1268	76 %	48
2023-05-21	1340	1039	78 %	49
2023-05-22	1965	1554	79 %	53
2023-05-23	1870	1480	79 %	60
2023-05-24	2017	1622	80 %	56
2023-05-25	1901	1501	79 %	<b>H 66</b>
2023-05-26	<b>H 2043</b>	1556	76 %	52
2023-05-27	1665	1195	72 %	60
2023-05-28	1349	1023	76 %	51
2023-05-29	1415	1087	77 %	52
2023-05-30	1664	1299	78 %	48
2023-05-31	1871	1450	77 %	55
2023-06-01	1880	1456	77 %	52
2023-06-02	1894	1515	80 %	52
2023-06-03	1510	1133	75 %	52
2023-06-04	1241	963	78 %	53
2023-06-05	1734	1372	79 %	56
2023-06-06	1745	1409	<b>H 81 %</b>	48
2023-06-07	1717	1343	78 %	52
2023-06-08	1697	1354	80 %	52
2023-06-09	1734	1397	<b>H 81 %</b>	57
2023-06-10	1450	1161	80 %	47

2023-06-11	1230	971	79 %	49
2023-06-12	1700	1324	78 %	49
2023-06-13	1689	1354	80 %	50
Summary	SUM: 55101	SUM: 43216	AVG: 78 %	



# McGee & Associates

Landscape Architecture

**Project:** LELY GOLF ESTATES BEAUTIFICATION, M.S.T.U.  
**Location:** MSTU DISTRICT ROADWAYS  
**Project Manager:** Dan Schumacher, Collier County Public Services Division, Public Transportation & Neighborhood Enhancements Department  
**Consultant:** McGee & Associates  
**Contractor:** Superb Maintenance  
**Report Date:** FY22-23, 06/01/2023

**Landscape Architect Observation Report:** May 2023  
  
**Consultant's Representative:** Michael A. McGee, rla, isa  
**Contractor's Representative:** Robert Kindelan, Gary Gorden  
**Observation Date:** 06/01/2023

**Report No. 8 (FY23)**

**AC** - Indicates major or repeating items recommended to be discussed by the Advisory Committee

**S** - Indicates items to be addressed by staff. **C** - Indicates items to be addressed by Contractor

Contractor is requested to address items as soon as possible and indicate in **RESPONSE/COMMENTS** column when and which items are corrected.

**Note:** Copy picture out of comment boxes and then paste to additional sheet if picture is desired in larger size.

LOCATION/WORK AREA	AC	S	C	R	OBSERVATION & RECOMMENDATIONS	ADDITIONAL COMMENTS
<u>All locations</u>		X	X		Multiple locations have irrigation heads that are on risers leaning. It is recommended to add strapped steel rebar beside risers for support.	Strikethrough indicates items that have been addressed or being addressed and will be removed from the next month's report. <b>Yellow</b> highlighting indicates items that need to be addressed as soon as possible for safety issues, potential plant damage or to reduce future maintenance issues.
<u>St. Andrews Blvd. &amp; US 41 Inbound R/W South</u>	X	X	X		R.O.W. area east of shopping center entrance, last 6 parking spaces across from median #2: Existing yellow Allamanda shrub hedge required by the LDC buffer requirements has declined and it is recommended to replace it with Variegated Schefflera Arboricola 'Trinette' 3 gal. size. (39) required to plant double staggered row hedge as required by LDC.	
		X	X		R.O.W. area east of shopping center entrance across from median #2: Queen Crape Myrtle tree staking has failed and needs to be removed. Bracing strapping needs to be cut off trunk because it is starting to girdle the trunk. If bracing is need then completely replace.	
		X	X		R.O.W. area east of shopping center entrance, last 6 parking spaces across from median #2: Remove volunteer Oyster plants.	
	X				Monument sign structure renovation is generally complete.	
<u>Outbound R/W North Suncoast Credit Union side</u>	X	X	X		The existing yellow Allamanda shrub hedge that is part of the LDC code buffer requirements for screening parking areas have decline and it is recommended to remove existing and continue replanting of Variegated Schefflera Arboricola 'Trinette' 3 gal. size as replacements. (73) required to plant double staggered row hedge as required by LDC.	
	X				Monument sign structure renovation is generally complete.	
<u>St. Andrews Blvd. Median #1</u>		X	X		Second valve box from east end is damaged and needs replacement.	
		X	X		Annual replacements have been approved	M&A 6/1/23: New annuals planted week of 5/29/23. Yellow Purslane border and Deep Pink Pentas field.
<u>Median #2</u>		X	X		The fourth valve box from the east end has hole in lid and bees are present. Recommend removing bees and replace box lid.	
<u>Median #3</u>	X	X	X	7	At address 105: Recommend removal of all remaining Plumbago shrubs, fill in low area with clean local topsoil (2-3 C.Y.+/-), and replant area with a single row of (14) African Iris 3 gal. size. Existing irrigation layout will need to be adjusted so that coverage is from the	

**Design \* Environmental Management \* Planning \* Arborist**

5079 Tamiami Trail East / P. O. Box 8052 Naples, Florida 34101  
 Phone (239) 417-0707 \* Fax (239) 417-0708  
 LC 098 \* FL 1023A

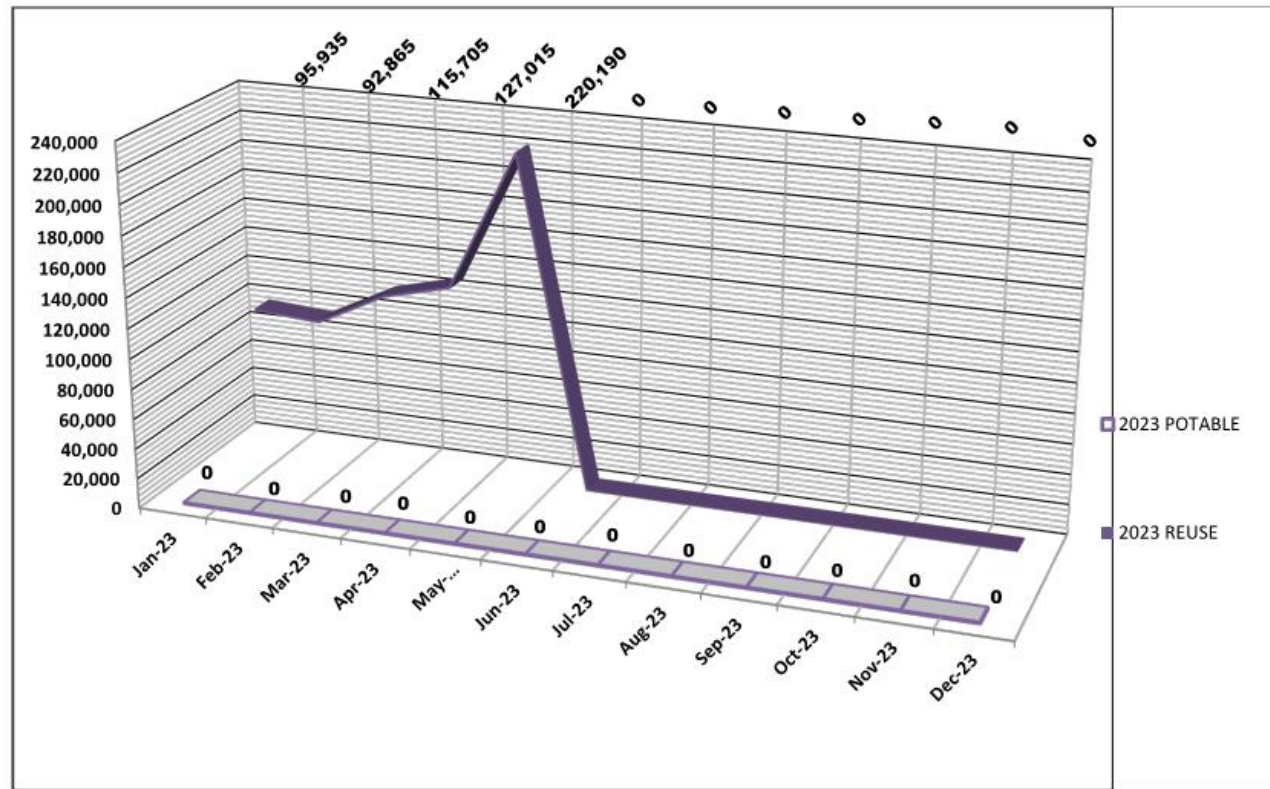
LOCATION/WORK AREA	AC	S	C	R	OBSERVATION & RECOMMENDATIONS	ADDITIONAL COMMENTS
					back of curbing if Iris installed,	
Median #4		X	X	4	Two west end Foxtail palms are being monitored for signs of Ganoderma fungus.	
Median #5		X	X	4	3rd Foxtail palm from west end: Recommend additional specialty fertilizer applied (i.e. Magnesium Sulfate 0-0-0-16Mg)	M&A 05/04/23: Removal is recommended and palm is flagged with white ribbon.
Median #6	X	X	X	6	At address 228: (26 13) Plumbago shrubs are defoliated or dead and need to be replaced. Recommended alternative is to remove all remaining Plumbago and replant area with single row of 3 gal. size Yellow African Iris. Existing irrigation layout will need to be adjusted so that coverage is from the back of curbing if Iris installed,	
		X	X	6	At address 240: (3) Plumbago shrubs need to be replaced with 3 gal. size replacements.	
Median #7		X			No major issues observed.	
Median #8		X	X	3	Foxtail palm on west end is in decline. Recommend additional specialty fertilizer applied (i.e. Magnesium Sulfate 0-0-0-16Mg)	M&A 3/2/23: Ganoderma confirmed schedule removal.
Median #8A		X			No major issues observed.	
Median #9		X			One Washingtonia palm group location did not get renovation double Alexander palms planted. If Washingtonia palms are to be removed then Alexander palm installation is recommended.	M&A 6/1/23: Location is at address 388: (2) Double Alexander palms are recommended to be planted in the two enter gaps between the three palms.
Median #10		X			No major issues observed.	
Forrest Hills Blvd Median #11		X			No major issues observed.	
Median #12		X	X	2	At address 438: Bougainvillea shrubs are declining due to rats eating bark off main trunks. Rodent removal treatment is recommended.	M&A 6/1/23: There appears to be no additional activity declining the Bougainvillea.
Forest Hills Cart Crossing & Lake		X	X	2	The golf course is under renovation so water source will be an issue. Water truck maybe needed based upon rainy season arrival.	M&A 6/1/23: Currently existing rains are adequate for the turf and planting areas they are not under water stress.
	X	X	X	3	The Perennial peanut in front of sign is gone. Recommend replanting area with (29) 1 gal. orange flowered Bulbine 'Hallmark' 12" o.c.	M&A 6/1/23: With golf course irrigation cut off it is recommended to wait until full rainy season if planting is desired.
		X	X		Sand cordgrass needs to be treated for insects and cutback to remove damaged foliage.	
Valley Stream Cr. Median #13		X	X	3	The north Tabebuia tree with the duckbill staking system has had one of the cables cut which appears to be from hedge trimmer. Cable needs to be repaired and would further recommend that if trimming personal cannot remember cables are present that when the cables extend near, over or into shrubs needing trimming that 3/4" or 1" sch. 40 pvc pipe be put over the cables from the ground to the turnbuckles.	
		X	X	7	(6) Plumbago shrubs need to be replaced with 3 gal. size.	M&A 02/02/23: Total Plumbago needed is (8), (3) on east side and (5) on west side.
	X	X		7	The south purple Trumpet tree was rolled over during the storm. It was observed that the trunk had rotated out of the root ball and may have broken some main roots. Based upon what was observed while the tree was down it is recommended this tree be replaced because it may no ever re-root properly and become secure.	M&A 05/04/23: Handroanthus impetiginosis (Purple Trumpet tree) 11'-13' Ht., 3.5 Cal., 5'-6' Spr., 36" dia. B&B or 65 Gal. size container.
Pebble Beach Blvd. Median #14		X			No major issues observed.	
Median #15		X	X	6	At address 40: (3) Plumbago shrubs need to be replaced with 3 gal. size.	
Median #16		X			No major issues observed.	
Median #17		X	X	2	At address 124: If tree staking is not properly installed and not needed then it should be	M&A 6/1/23: Staking poles were removed but strapping

LOCATION/WORK AREA	AC	S	C	R	OBSERVATION & RECOMMENDATIONS	ADDITIONAL COMMENTS
					removed, if needed then re-install it correctly.	and old nursery center support pole have been left on the tree. The strappings are embedded and girdling the tree trunk. Please remove.
		X	X	6	At address 132: (12) Plumbago shrubs need to be replaced with 3 gal. size.	
		X	X	6	At address 116: (7) Plumbago shrubs need to be replaced with 3 gal. size.	
Median #18		X	X		Perennial peanut plantings on north end of median is dry.	
Median #19		X	X		Auto accident has caused the removal of (13) existing dwarf Bougainvillea 'Helen Johnson'. Remaining stumps should be removed, and replacement should be with 3 gal. size plants, but no until rainy season unless irrigation is present.	
		X	X		The Perennial peanut has been planted twice and it is basically gone again believed to be due to Rabbits. Recommend replanting area with (45) 1 gal. orange flowered Bulbine 'Hallmark', 18" o.c.	M&A 05/04/23; Perennial peanut plantings on north and south ends of median are dry.
Pebble Beach Blvd. Golf Cart Crossing		X	X		The golf course is under renovation so water source will be an issue. Water truck maybe needed based upon rainy season arrival.	
		X	X	3	All Sider lily plants need to be treated for leaf spot fungus as soon as possible and remove heavily damaged foliage from the bottom up. Do not remove any new sprouts just foliage.	
Thorncrest Ln. cul-de-sac #20	X	X			Due to age and amount of decline it is recommended to renovate this cul-de-sac during this rainy season.	M&A 09/08/22: Renovation on hold, Remove dead plants. M&A 11/4/22: (15-20) dwarf Bougainvillea plants are dead, missing or declined and need to be replaced. Replace with Bougainvillea 'Helen Johnson' 3 gal. size
Briarcliff Ln. Cu-de-sac #21	X	X			Due to age and amount decline it is recommended to renovate this cul-de-sac during this rainy season.	M&A 09/08/22: Renovation on hold
Heather Grove Ln. Cul-de-sac #22		X			(8) Bougainvillea plants on the eastern side have been run over and need to be reviewed for removal. Any replacements would need to wait until rainy season has started.	
Baltusrol Signs		X	X	2	The golf course is under renovation so water source will be an issue. Water truck maybe needed based upon rainy season arrival.	M&A 6/1/23: The Golf course irrigation head that waters the outbound sign plantings has been removed.
		X	X	3	Outbound side: Additional mulch is needed around front & back of sign directly and toward Philodendron plants.	
	X	X	X	7	Outbound side: Remove all Plumbago shrubs and replant area with (11) 3 gal. size replacements. Replant Perennial peanut area with (31) 1 gal. size 'Golden Glory'. Inbound side: (5) Plumbago shrubs need to be replaced with 3 gal. size.	M&A 4/6/23: Since there have been issues with Perennial peanut establishing and growing in this location it is recommended that (45) 1 gal. orange flowered Bulbine 'Hallmark', 18" o.c. be planted to replace peanut. M&A 6/1/23: Place plantings on hold until full rainy season or until golf course irrigation is restored.
Doral Cr. East R/W		X	X	2	The first Tabebuia tree from Rattlesnake Hammock Rd. needs to be replaced due to previous hurricane damaged. Install Handoanthus chrysotrichus 'Golden Trumpet Tree', 11'-13' ht., 3.5" cal., 5'-6' spr., 36" B&B or 65 Gal. Single leader trunk.	
West R/W & Rattlesnake Hammock Rd.		X	X	4	Pull mulch away from being in contact with Iris plant bases or foliage.	
		X	X	3	(5) White African Iris plants are missing along back of sidewalk in front of Podocarpus hedge. Replace with 3 gal. size plants.	M&A 6/1/23: After tree trimming there are a total of 15 white Iris plants that should be replaced. (10) White African Iris 3 gal. size recommended.
Median #23		X	X	4	All the Geraniums and 5-6 Alyssum annuals are missing from the north end. Replacement	M&A 4/6/23: Generally, all annuals are gone.



LOCATION/WORK AREA	AC	S	C	R	OBSERVATION & RECOMMENDATIONS	ADDITIONAL COMMENTS
					is recommended.	
		X	X	6	(20) Dwarf Red "Fireball" Crown of thorn are missing or need to be replaced.	M&A 11/4/22: The areas of declined plants have expanded and an additional (10-15) replacement plants will be needed. 3 gal. size plants are recommended. M&A 12/4/22 On the southwest end of median Crown of thorn plants were run over. M&A 3/2/23 Plantings on hold until further review by Committee concerning renovation.
Median #24 Treasure Point Cul-de-sac		X			No major issues observed.	
Warren St. Pumping Station					Protective bollards have been repainted yellow for high visibility.	
		X	X	2	The potable water meter box is full of dirt & debris. Could maintenance personal cleanout the box so that it can be read. See water use schedule.	
Valley Stream Cr. Irrigation					See water use schedule.	
Fertilization		X	X		See schedule.	

Lely Golf Estates Beautification MSTU Reuse Mixing Chamber Annual Water Use thru 5/23



Notes: 2019 Total Water Use: Reuse 1,618,748 gallons, Potable 27,680 gallons  
 2020 Total Water Use: Reuse 1,340,040 gallons, Potable 44,945 gallons  
 12/2021 New potable water meter installed.  
 2021 Total Water Use: Reuse 1,562,060 gallons, Potable 31,740 gallons  
 2022 Total Water Use: Reuse 1,591,970 gallons, Potable 64,374 gallons

6/1/2023

DATE	REUSE PSI	POTABLE WATER METER (X 100)	POTABLE WATER USE GALLONS	REUSE WATER METER READING (X x 100)	REUSE WATER USE GALLONS	TOTAL WATER APPLIED
5/1/2023	85	64,300.20		46,515.60		-
5/8/2023	80	64,300.20	-	46,848.20	33,260.00	33,260.00
5/15/2023	82	64,300.20	-	47,314.30	46,610.00	46,610.00
5/24/2023	70	64,300.20	-	48,075.40	76,110.00	76,110.00
6/1/2023	80	64,300.20		48,717.50	64,210.00	64,210.00
<b>TOTALS:</b>			<b>0.00</b>		<b>220,190.00</b>	<b>220,190.00</b>
<b>PERCENTAGE OF TOTAL VOLUME USED</b>			<b>0.0%</b>		<b>100.0%</b>	

DATE	POTABLE WATER METER READING (X 1)	POTABLE WATER USE GALLONS
5/4/2023	431640.05	
5/8/2023	433610.07	1970
5/15/2023	436590.01	2980
5/24/2023	439510.05	2920
6/1/2023	440570.04	1060
		<b>8,930</b>

LELY GOLF ESTATES M.S.T.U.

Fund 162000000

June 15, 2023

	FY-23	Vendor	Item	PO#	Budget	Commitments	Expenditures	Budget Remainder
1	CUR AD VALOREM TAX				\$ (360,700.00)	\$ -	\$ (341,406.59)	\$ (19,293.41)
2	DEL AD VALOREM TAXES				\$ -	\$ -	\$ -	\$ -
3	OVERNIGHT INTEREST				\$ -	\$ -	\$ (7,415.56)	\$ 7,415.56
4	INVESTMENT INTEREST				\$ (3,000.00)	\$ -	\$ (1,984.66)	\$ (1,015.34)
5	INTEREST TAX COLL.				\$ -	\$ -	\$ (215.22)	\$ 215.22
6	<b>REVENUE STRUCTURE</b>				<b>\$ (363,700.00)</b>	<b>\$ -</b>	<b>\$ (351,022.03)</b>	<b>\$ (12,677.97)</b>
7	TRANS FROM PROPERTY APPRAISER				\$ -	\$ -	\$ -	\$ -
8	TRANS FROM TAX COLL				\$ -	\$ -	\$ -	\$ -
9	CARRY FORWARD GEN				\$ (341,400.00)	\$ -	\$ -	\$ (341,400.00)
10	CARRY FORWARD OF ENCUMB				\$ (206,328.95)	\$ -	\$ -	\$ (206,328.95)
11	NEG 5% EST REV				\$ 18,300.00	\$ -	\$ -	\$ 18,300.00
12	<b>TRANSFERS &amp; CONTRIB</b>				<b>\$ (529,428.95)</b>	<b>\$ -</b>	<b>\$ -</b>	<b>\$ (529,428.95)</b>
13	<b>TOTAL REVENUE</b>				<b>\$ (893,128.95)</b>	<b>\$ -</b>	<b>\$ (351,022.03)</b>	<b>\$ (542,106.92)</b>
14	ENG. FEES & OTHERS	McGee & Associates	Landscape Architecture	4500221878	\$ 29,083.95	\$ 10,191.15	\$ 7,928.85	\$ 10,963.95
15	ABSTRACT FEES				\$ -	\$ -	\$ -	\$ -
16	INDIRECT COST REIMBURSE	Collier County	Indirect Cost	Direct Pay	\$ 7,200.00	\$ 3,600.00	\$ 3,600.00	\$ -
17	INTERDEPT PAYMENT		Sign Monument Easements		\$ -	\$ -	\$ 408.00	\$ (408.00)
18	LANDSCAPE INCIDENTALS	Superb Landscape Services	Landscape Incidentals	4500220470	\$ 40,000.00	\$ 35,938.16	\$ 4,061.84	\$ (0.00)
19	OTHER CONTRACTUAL (999)	Superb Landscape Services	Grounds Maintenance	4500220470	\$ 125,000.00	\$ 24,655.00	\$ 65,345.00	\$ 35,000.00
				Pcard		\$ -	\$ 61.10	
		McShea Contracting	Paver Style Crosswalks	4500216252		\$ -	\$ 49,495.00	
		Davey Tree Expert	Tree Pruning	4500224112		\$ 2,400.00	\$ -	
		Naples Electric Motor Works	Pump Maintenance	4500224286		\$ -	\$ 200.00	
20	OTHER CONTRACTUAL (990)				\$ 74,495.00	\$ 2,400.00	\$ 52,156.10	\$ 19,938.90
21	ELECTRICITY	FPL	Electricity	4700004739	\$ 4,000.00	\$ 1,361.84	\$ 2,638.16	\$ -
22	WATER AND SEWER	Collier County Utilities	Water - Irrigation	4700004740	\$ 10,000.00	\$ 3,224.69	\$ 5,275.31	\$ 1,500.00
23	INSURANCE GENERAL	Collier County	Insurance General	Direct Pay	\$ 600.00	\$ 150.00	\$ 450.00	\$ -
24	SPRINKLER SYSTEM	SiteOne	Irrigation Parts & Pumps	4500220473	\$ 3,000.00	\$ 1,839.96	\$ 660.04	\$ 500.00
25	MULCH	Forestry Resources		Pcard	\$ 5,000.00	\$ -	\$ 2,998.92	\$ 2,001.08
		Graybar	Lumec LED Retro Fixtures	4500222912		\$ -	\$ 7,293.48	
		Hart's Electrical	Electrical Repairs	4500220480		\$ 4,674.60	\$ 1,325.40	
26	LIGHTING MAINTENANCE				\$ 15,000.00	\$ 4,674.60	\$ 8,618.88	\$ 1,706.52
27	LICENSE & PERMITS				\$ 2,000.00	\$ -	\$ 102.89	\$ 1,897.11
		Premier Staffing	Transcription (FY23)	4500220472		\$ 1,064.30	\$ 1,514.70	
		Sight N Sound LLC	Holiday Decorations	4500221732		\$ -	\$ 3,800.00	
		Amazon	Holiday Lights	Pcard 5535-49		\$ -	\$ 9.89	
		Special Service	American Flags			\$ -	\$ 355.10	
28	OTHER MISCELLANEOUS				\$ 11,000.00	\$ 1,064.30	\$ 5,679.69	\$ 4,256.01
29	OFFICE SUPPLIES				\$ 100.00	\$ -	\$ -	\$ 100.00
30	COPYING CHARGES	J.M. Todd	Copier CPC	4500221236	\$ 200.00	\$ 69.17	\$ 130.83	\$ (0.00)
31	FERT HERB CHEM	Howard Fertilizer		Pcard 5515-11	\$ 3,500.00	\$ -	\$ 2,274.56	\$ 1,225.44
32	OTHER OPERATING				\$ 200.00	\$ -	\$ -	\$ 200.00
33	TRAFFIC SIGNS	National Traffic Sgins		Pcard 5513-5	\$ 3,000.00	\$ -	\$ 2,228.00	\$ 772.00
34	<b>OPERATING EXPENSE</b>				<b>\$ 333,378.95</b>	<b>\$ 89,168.87</b>	<b>\$ 164,557.07</b>	<b>\$ 79,653.01</b>
35	IMPROVEMENTS GENERAL	NR Contractors Inc.	Entryway Monuments	4500217688	\$ 338,950.00	\$ 149,750.00	\$ -	\$ 189,200.00
36	<b>CAPITAL OUTLAY</b>				<b>\$ 338,950.00</b>	<b>\$ 149,750.00</b>	<b>\$ -</b>	<b>\$ 189,200.00</b>
37	TRANS FROM FUND 152 TO FUND 111		Reimbursement for Staff Support		\$ 58,800.00	\$ -	\$ 58,800.00	\$ -
38	TRANS FROM FUND 152 TO PROPERTY APPRAISER				\$ 3,100.00	\$ -	\$ 2,055.92	\$ 1,044.08
39	TRANS FROM FUND 152 TO TAX COLLECTOR				\$ 8,900.00	\$ -	\$ 7,828.13	\$ 1,071.87
40	<b>TRANSFERS</b>				<b>\$ 70,800.00</b>	<b>\$ -</b>	<b>\$ 9,884.05</b>	<b>\$ 2,115.95</b>
41	RESERVES FOR CONTINUING OPERATIONS - INSURANCE				\$ 150,000.00	\$ -	\$ -	\$ 150,000.00
42	<b>RESERVES</b>				<b>\$ 150,000.00</b>	<b>\$ -</b>	<b>\$ -</b>	<b>\$ 150,000.00</b>
43	<b>TOTAL BUDGET</b>				<b>\$ 893,128.95</b>	<b>\$ 238,918.87</b>	<b>\$ 233,241.12</b>	<b>\$ 420,968.96</b>

LELY GOLF ESTATES M.S.T.U.

Fund 1620000000

June 15, 2023

95,871,609	FY 12 Final Taxable Value	
92,697,303	FY 13 Final Taxable Value	-3.3%
95,718,423	FY 14 Final Taxable Value	3.3%
99,596,489	FY 15 Final Taxable Value	4.1%
106,888,467	FY 16 Final Taxable Value	7.3%
116,823,687	FY 17 Final Taxable Value	9.3%
127,802,080	FY 18 Final Taxable Value	9.4%
135,136,761	FY 19 Final Taxable Value	5.7%
142,494,654	FY 20 Final Taxable Value	5.4%
152,194,183	FY 21 Final Taxable Value	6.8%
156,289,928	FY 22 Final Taxable Value	2.7%
<b>\$180,331,047</b>	<b>FY 23 Gross Taxable Value</b>	
<b>15.38%</b>	<b>Adjustment FY 22 to FY 23</b>	
	<b>FY 23 Gross Taxable Value</b>	<b>FY 22</b>
<b>Millage</b>	<b>2.0000</b>	<b>2.0000</b>
<b>Tax Dollars</b>	<b>\$360,662</b>	<b>\$312,580</b>

<b>Total Available Balance</b>	<b>\$ 420,968.96</b>
<b>Plus Committed And Not Spent</b>	<b>\$ 238,918.87</b>

<b>Estimated Cash</b>	<b>\$ 659,887.83</b>
-----------------------	----------------------

<b>Estimated Cash Less</b>	
<b>Uncollected Taxes</b>	<b>\$ 640,594.42</b>

Prepared on 6/7/23

2.0 mill cap  
+\$48,082      0.00%

Lely Beautification MSTU

<b><u>LELY MSTU LIGHTING INSPECTION</u></b>		<b>Inspection Date:</b>			<b>6/6/2023</b>	
<b>ST. ANDREWS ENTRANCE - FROM US-41</b>						
<b>TUBE</b>		<b>A</b>	<b>B</b>	<b>C</b>	<b>D</b>	<b>E</b>
Sign - Enter	<b>1</b>					
Sign - Exit	<b>2</b>					
<b>SPOT</b>		<b>○</b>	<b>A</b>	<b>B</b>	<b>Notes</b>  ▪ Current outages are sequenced in <b>RED</b> .  ▪ Outages repaired in the past month are sequenced in <b>GRAY</b> .  ▪ Dim Metal Halide replacements in <b>PURPLE</b> .	
Flagpole - US	<b>1</b>					
Flagpole - FL	<b>2</b>					
Flagpole - BCC	<b>3</b>					
<b>LUMINAIRE</b>		<b>○</b>	<b>A</b>	<b>B</b>		
Single	<b>1</b>					
Single	<b>2</b>					
Single	<b>3</b>					
Single	<b>4</b>					
Single	<b>5</b>					
Single	<b>6</b>					
Single	<b>7</b>					
Single	<b>8</b>					
Single	<b>9</b>					
Single	<b>10</b>					
Single	<b>11</b>					
<b>PEBBLE BEACH BLVD</b>						
<b>LUMINAIRE</b>		<b>○</b>	<b>A</b>	<b>B</b>		
Double	<b>1</b>					
Double	<b>2</b>					
Double	<b>3</b>					
Double	<b>4</b>					
Double	<b>5</b>					
Double	<b>6</b>					
Double	<b>7</b>					
Double	<b>8</b>					
Double	<b>9</b>					
Double	<b>10</b>					
Double	<b>11</b>					
Double	<b>12</b>					
Double	<b>13</b>					
Double	<b>14</b>					
Double	<b>15</b>					
Double	<b>16</b>					
Double	<b>17</b>					
Double	<b>18</b>					
Double	<b>19</b>					
Double	<b>20</b>					
Double	<b>21</b>					
Single	<b>22</b>					
Single	<b>23</b>					

1909

Lely Beautification MSTU

<b><u>LELY MSTU LIGHTING INSPECTION</u></b>		<b>6/6/2023</b>		<b><u>Notes</u></b>	
<b>FOREST HILLS @ AUGUSTA</b>					
<b>'LELY' SIGN</b>		●	A		B
Solar Light	--				
<b>DORAL CIRCLE</b>					
<b>TUBES</b>		●	A		B
Sign - Enter	1				
Sign - Exit	2				
<b>LUMINAIRE</b>		●	A		B
Double	1				
Double	2				
Single	3				
Single	4				
Single	5				
Single	6				

1909



# Beautification Median 23, Doral Circle - 6/15/2023

- Color themed. i.e. red/yellow/orange family with black mulch
- Utility box (stainless steel) covered with foil
- Flag pole
- Christmas lights on palms

Resident's Handout  
Andrea Geyer  
Doral Circle

## Suggestion for Plants



**Variegated Ginger / Shell ginger (Alpinia zerumbet 'Variegata')**  
4' tall by 5'-6' wide,  
USDA hardiness zones 8-11, bright yellow and

green-striped lanceolate leaves, blooms in spring with white clusters of shell-shaped flowers with pink tips



**Tabebuia tree yellow (Tabebuia caraiba)**  
USDA zones 10 and 11, small, multi-stemmed flowering tree with twisting trunks, clusters of

golden yellow tubular flowers, and narrow, oblong silvery green leaves.



**Jatropha Tree**  
currently nicey, mature established in median. Could be relocated towards center



**Lantana (steril)**  
flowering shrub with rounded clusters of small, brightly colored flowers in yellow, orange, white, red, pink, blue, or purple year round

**White Muhly grass (Muhlenbergia capillaries "White Cloud")**

fluffy plumes of delicate white flowers in late summer and fall that rise a foot above the narrow blue green foliage.

The flowering stalks will mature and persist into winter. 'White Cloud' grows 3 to 4 ft. tall and 2 to 3 ft. wide.



**Impatiens**  
as annuals throughout winter



**Canna yellow, red**  
flower from June to October, leaves are wide and long (resembling banana leaves) in green, bronze, or multicolored patterns



current 6/15/23



Landscape Design Draft

